



NOVEMBER 2018

Walkway reopens but rules apply

As summer approaches and the ground has become a lot drier, the Lions Bush Walkway has now reopened.



Kauri die-back is a threat to our kauri trees

Because kauri die-back disease is an ongoing threat to our bush, it is extremely important that users of the walkway have clean footwear and use the wash stations. However, as this disinfectant does not sufficiently treat soil that may already be on shoes or boots it's important that footwear is already clean before applying it. In other words: **arrive at the wash station with clean footwear.**

One part of the walkway will remain closed as it has a high density of kauri and also needs extensive conservation work. However, this will not prevent walkers from walking through from one end to the other, doing the round trip. Other parts of the track will be redirected to avoid kauri trees where possible.

Work to be done on the walkway in the near future includes installing better wash stations at each end of the track to help mitigate the chances of spreading this disease. We are thankful to the Northland Regional Council, Department of Conservation and Ministry of Primary Industries for supplying us with these stations. The cost of board-walks etc. is very high so we are looking for funding to be able to do this where necessary and as much as we can.

Paparoa Lions Club

Medical Centre upgrade has begun!

Paparoa Medical Society is delighted to announce, after many delays and frustrations, that work is about to start on the new Medical Centre and Community Library building upgrade for Paparoa.

Within the next two weeks builders and other trades will be transforming the old Council Building into a modern, fit for purpose facility. As befits a community building open to the public there will be major upgrades to the interior, with new plumbing and wiring, consultation and treatment rooms, plus a dedicated space for the Paparoa Community Library. Also requiring attention will be the fire safety rating, emergency exits, improvements to the water supply and sewage disposal systems.

Medical Society chair, Graham Taylor, said that many aspects of the building were not compliant for a public building in today's world. Bringing these items up to standard will incur considerable cost and obtaining the necessary funding has taken much longer than expected. The Society is deeply grateful to many individuals and organisations from the Paparoa community for their generous financial support. It is very grateful to ANZ Bank for their commitment to the future of Paparoa.



Action at last - Waterflow's digger starts on the sewerage disposal upgrade

The Medical Society understands the disruption and inconvenience the closure of the building has caused and appreciates the patience of the community. As a registered Charitable Trust with IRD accredited Donee status, Paparoa Medical Society would welcome any contributions from businesses, individuals or organisations. Such donations would assist in providing the quality finishing touches to the project and would receive a 33% tax refund.

However, it is now all systems go, with the works expected to take around 8 weeks. Following the renovations, Paparoa will have a first-class facility that will serve the community for many years to come.

Paparoa Gala Day this Saturday



Come to the annual Paparoa Gala Day this Saturday, 3rd November! It's all about our community having a fun family day out with games, competitions, music, a shared lunch and more ... see more details pg 3.

Flea market stalls wanted at the Gala

Do you have second hand clothes, bric a brac, or general household items that could be sold at a fleamarket? We have fleamarket stalls available at the gala for \$12 a spot. Bring your own table (or two - we are not strict about you occupying a bit of extra space if you need it).

Set up is from 8.30am and the 'fleamarket' will run from 9-12pm in conjunction with the gala games and activities.

All stallholder fees and funds raised will go to our local Paparoa volunteers of Fire & Emergency NZ (FENZ).

To book a spot for a stall call Jillaine on 021 399 555 **now**.



Paparoa Press PP

PUBLISHED MONTHLY BY
Progressive Paparoa Inc. (PPI),
for Paparoa, Pahi, Matakohe,
Whakapirau and Tinopai.

CIRCULATION 1,050

CONTACT US - SALLY TAYLOR, EDITOR

• press@paparoa.org.nz
• ph 09 431 7209
• PPI, PO Box 107, Paparoa 0543
• www.paparoa.org.nz

ADVERTISING

Rate Card available by email
Booking & Copy deadline:
15th of month
Publication date 1st of month

Firing up for February



Paparoa A&P Show committee is gearing up to be ready for its 2019 annual show, February 3.

Top of the list is the fantastic news that Circus Kumarani will be providing family workshops teaching juggling, hooping, tight-rope walking and more!

Also on the good news list is that, despite *mycoplasma bovis*, all cattle events will be going ahead including the classes for calves. President Janine Hames is working on biosecurity measures required to minimise all risk so that everyone can bring cattle to the show and have a great day out. Cattle ring coordinator Susan Clayton is confident the day will go well and looks forward to the return of many competitors.

Paparoa based Northern Districts Team Roping Club will be another feature at next year's show. Club President, Steve Allen says: "For anyone looking for a way to get into the sport of team roping, barrel racing and other stock skills, the A&P Show day is a great opportunity to get involved with your horse in the games

and meet like-minded people."

New Zealand dairy goat breeds will also be showcased. Dairy goat ring coordinator, Teresa Atkins says, "You'll get a chance to see goats on parade and see which will be the champion. You're welcome to come and meet them all at the goat pavilion. During lunch break a fun activity with pet goats will provide further entertainment."

Last show we had an astonishing array of entries in the many classes for the indoor exhibits. Everything from children's writing and crafts, to cheese-making, vegetable growing, photography, arts and crafts as well as the dahlia class - remembering that the 2018 dahlia championship was won by mayor Jason Smith.

"Now is the time to get the ground ready and plant your dahlias for the show. There's a



special class and a good prize for novice growers! Check the website for the Indoor Schedule and plant marigolds, pansies, geraniums, etc. for the floral section. There are many other classes to prepare entries for - photography, homebrew, sewing, knitting and other handicrafts and a large children's section," says committee member, Dorothy Simpson.

We will of course, be having an equestrian ring, as well as trade exhibitors and so much more.

Watch this space! For more information and updates: go to paparoashow.org.nz or find us on Facebook @PaparoaShow.

Liz Clarke, Show Committee

Award winning
extra virgin olive oil



Grown on the edge of the Kaipara.
Winner of two golds, one silver and best
in class at the 2016 Olivetti Awards.

Order from our website
www.chapeloliveoil.co.nz

or visit our olive grove at
46b Merril Road Paparoa
Ph 09 431 7572

Lisa's Beauty Retreat

Easy to find! - Paparoa Sterling Bush Reserve

lisa_annes@yahoo.com / www.lisaannesbeauty.com / 021455904

Beautiful Hand Crafted Gift Vouchers, available for Christmas and Birthdays!

Professional- Friendly - Confidential- Organic and Natural Skin Care

23 Years Experience in the Beauty Industry - International Diplomas C.I.B.T.A.C - C.I.D.E.S.C.O in Electrolysis, Beauty & Bodyworks
- Post Graduate Certificates in Electrolysis, Massage, Skincare, Nutrition & Supplements

Welcome to my beautiful Beauty Retreat, a relaxing and professional cabin with a tranquil bush outlook. All the necessities and details have been thought through to ensure the cabin will become one of your favourite places to visit, combining your treatments with a pampering and calming escape. Available to all including the mobility impaired. Looking forward to talking to you soon!



Invitation: Seniors Christmas Afternoon



Rotary is providing a Senior Citizens' Christmas afternoon tea with entertainment on Friday 23 November, 2-4pm at Kaiwaka's Community Hall (opposite Jacques).

If you are interested in joining us please call any of the following so we know what numbers to expect.

Eric 021 0304 630 Stella 021 1490 877

Eileen 021 1420 357 Dan (09) 4312 130



This invitation is open to all seniors living in our area inclusive from Tinopai to Mangawhai. Note that you will need to arrange your own transport.

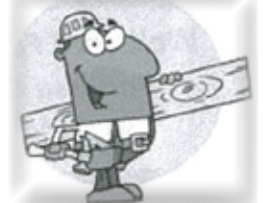
The Rotary Club of Maungaturoto and Districts Incorporated

M.K. Weber Sawmiller

CONTACT Marek by phone or drop into the mill
94 Tinopai Road, 09 431 7170

WE SELL:

- Pointed Electric Fence Battens
- 1st & 2nd Grade Fence Battens
- Retaining Wall Timber
- Weather Boarding
- Rough Sawn, Gauged & Dressed Timber
- Private Milling Undertaken



Timber cut to ANY size to suit your order

PPI update - what's happening

Progressive Paparoa Incorporated (PPI) is involved in many aspects of our community and is continually working to enhance Paparoa for the benefit of all.

GALA DAY

Our annual Paparoa Gala Day is being held on the November 3. It's all about a fun family day out and most activities are free with the odd one inviting a koha. Any money raised will go to our local FENZ (Fire and Emergency brigade), which will also be present on the day with fire engine rides and other fun stuff. There will be kids' games, baking and bunting competitions, homebrew competitions, flea market stalls, live music, face painting and puppet shows, finishing up with a shared lunch in the big marquee. We have great prizes for the competitions again this year and look forward to seeing you all there!

SPEED IN THE VILLAGE

PPI has been working closely with council and NZTA to find a traffic calming solution that everyone can agree on. We recently had a meeting in the village with the principal advisor for Urban Design and Landscaping from NZTA. He went away with a clear understanding of some of the challenges Paparoa faces in terms of speed through the village and there are some excellent solutions on the table. Watch this space for



further updates on this matter.

LIONS BUSH WALK

With Kauri dieback disease so much in the news the joint PPI/Lions committee has decided to build permanent boardwalks around some areas of kauri on the walk. This will be funded 50/50 by PPI and Lions with the materials costing around \$2500. Lions members will manage the construction and any assistance with transporting the materials to the site would be very welcome. If you would like to help contact any Lions member.

This project is stage one of a much larger project to ensure

the health of the kauri bush is protected for the future. The Bush Walk is a real treasure right in the heart of Paparoa.

POMEGRANATE WORKSHOP

Kaipara District Council arranged a workshop with renowned artist and community developer Milenko Matanovic of the Pomegranate Centre, Seattle. 'Pomegranate' principles are based on creating public spaces that best serve the community they're located in and to engage with the community from the very beginning of any proposed project. They incorporate art, form and function. PPI were very fortunate to have three representatives at the workshop which was held at the Paparoa Hall. A wide cross-section of community focused groups were also represented from throughout Kaipara.

PAPAROA FARMERS MARKET
LOCAL GOODS DIRECT FROM THE PRODUCER

EVERY SATURDAY
9am-noon
at the Village Green
ph Ruth 021 433 969

AL's Upholstery
Alan Hilton

Automotive Furniture Covers Seats
over 30yrs experience
021 0709101
100 Petley Rd, Paparoa

Paparoa walking group

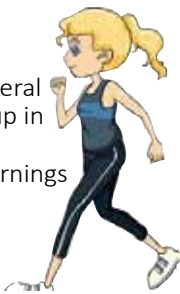
Since asking in the October's Press we've had several people interested in being part of a walking group in Paparoa - for fun, companionship and fitness.

The walking group is meeting on Thursday mornings 9.30am at the Village Green.

Other days may be added to suit.

If anyone else is interested please contact Libby 021 208 0093 or hames.jones@xtra.co.nz and we'll add you to the email list. All welcome. Enjoy!

Libby - for Paparoa Sports & Recreation Association



Maungaturoto St John Youth

If you have an affinity with young people and would like to help with our St John Cadets (who recently won a regional award for their efforts), please get in touch with Nyree Alcock (Youth Leader). She is at the Station on a Thursday from about 3.30pm to 5.30pm.

Feel free to come along and have a look at the activities they are involved in.



HUBAND CONTRACTORS LTD

Earthworks - Roading - Drainage - Siteworks

2088 Paparoa Valley Road, Paparoa
0800 234 449 or 09 431 8339
W: www.huband.co.nz
E: admin@huband.co.nz

10% off bulk compost or topsoil for the month of October & November!
(Mention this ad at checkout)

Locally owned and operated for 30 years! Come in and check out our retail yard, based in Paparoa

Ruawai Stop Bank Fun Run

Everyone is invited to join the inaugural Ruawai Stop Bank Walkway Fun Run on Sunday 16 December.

This family-friendly event will start with cyclists and follow with sessions for runners and walkers. The 7.4km (return) walkway stretches along a picturesque length of the famous Ruawai stop bank network. Participants will enjoy not only the beautiful outlook but also learn about the wildlife and history of the area and the impressive technology that makes Ruawai perhaps the most productive land in Northland. There will also be spot prizes, musical entertainment, food and drink. For those wanting a little intellectual stimulation as well as a workout, there will be a treasure hunt with a prize draw for all correctly completed entries. And as it will be nearly Christmas, participants are encouraged to dress up in a Christmas theme!

The Stop Bank Walkway is a key project for the Ruawai Promotions and Development Group (RPDG). Thanks to community volunteers, Kaipara



District Council, Lotteries Community Grants, Raupo Drainage Committee and local suppliers who have given their services at a discounted rate to make the project possible.

"Ruawai's stop banks play a vital part in protecting and managing our productive land," says RPDG Chair, Bruce Crompton. "We're delighted to open this section for the public as a permanent walkway and look forward to Ruawai's residents and visitors alike enjoying and learning about our area."

Registrations are from 8am at the Ruawai Reserve (by the boat ramp). Cyclists will set off at 9am; walkers, runners and buggies at 10am.

Anna Curnow

The 'Revolution of Industry'

The weather could not have been better. We arrived at The Kauri Museum's Settler's Day a full car park and were instructed that the graveside car parking was being used for overflow.

Everyone was in good spirits, not that that surprised me, as it seems to us that everyone is in a better mood in this district compared to Auckland to which we are banished during the week ... friendlier, happier and there's more time to chat!

What a treat to have all senses covered and then some. There was the noise of the machine engines that only get going on days like these, a noise that would have been heard from miles away! We saw the history of our precious land retold, families sharing a great day out tasting traditional sausages or indulging in naughty (but nice) candy floss.

People could take away beautifully scented tussie mummies (traditionally given to maidens to ward off smells). We could talk with First Aid volunteers from St Johns, Dargaville medical centre staff with brochures to educate on the latest innovative ways to stay healthy, to the Northland Regional Council, DOC and

to the environmental forum about weeds, pests and what we can do to rid them from playing havoc in our gorgeous and idyllic land.

The local farrier was in action and the horse rider resplendent on her beautiful horse in traditional garb. Furthermore there was wood chopping to see and try, beautiful heritage roses to



Making Tussie Mummies

smell, traditional brick making to watch and 'have a go' at and butter to make while music was played all around and there was local yummy brew from Paparooa to be tasted.

To feel the atmosphere of these past times and how it lives on here in Northland will be fondly remembered by this year's hundreds of visitors.

In this day and age, many entities like The Kauri Museum struggle to make money, so it's even more special that 'Settler's Day' is an annual event. Don't you all agree? It's a fantastic thing to do - to re-create our past for locals and

holidaymakers on this day as described and with no charge for entry. I thank the volunteers who not only looked great for the 'Revolution of Industry' but who give their time, unpaid, to set up the day. Considering how big and professional the event was it must have taken some doing.

We certainly will be back next year! Dr Melanie Miller (PhD)



Els Bloom and her horse

Need a Shed?



- Timber and steel buildings any size
- We do plans and engineers designs for council
- Farm sheds
- Commercial buildings
- Feed pad shelters
- Goat/Chicken sheds
- Horse stables
- Lifestyle sheds
- Excavation, driveways and concrete floors

Your local builder: Andre Nicolai 021 202 9854

FENCING SPECIALISTS

CALL CHRIS HICKEY ON 027 561 1719 email: fencingspecialists.nz@gmail.com



ALL ASPECTS OF FARM & LIFESTYLE BLOCK FENCING & MAINTENANCE INCLUDING:

- Post & Batten • Entrances
- Post & Rail • Retaining Walls
- Stock Yards • Riparian Lots
- Netting • Subdivision

Libby's Councillor corner

Communities and people in Kaipara do amazing things. There are many groups of people doing great things to improve our district.

Sometimes it is an individual who has a vision, brings in others to create something great, or it may be a well established group which is there for the community should others want to take up activities such as bowls, tennis or gardening for example or they have community issues they need others' input on.

Country Calendar recently featured our very own Otamatea Harbour Care group instigated locally to improve the state of the harbour by planting. They have done such a great job of bringing others along and together they're achieving way more than anyone could alone.

Another example is the Mangawhai Factory Opportunity Shop. It was started by three women just 12 months ago and which has now given away money from op-shop sales to the tune of \$100,000 to over 25 community groups. I attended their first birthday in October and was impressed by what they had achieved. This seems to me like a win-win-win-win situation. A win for those who give away their used goods knowing others will benefit, win for those who purchase them locally at great prices, win for the Factory Op Shop committee who enjoy the chance to help the community, a win for the community groups who



benefit from the donations, and a further win for those who benefit from what the organisations provide. Plus the environment benefits from less waste. I know the group is keen to help any other communities across Kaipara set up a similar enterprise, so get in touch if this is of interest.

The Maungaturoto op shop operates in a similar fashion and many community groups and projects have benefited from this great initiative. There are lots of winners there too.

I was really fortunate to be the representative from Otamatea ward on Council's Citizen Awards Committee when the recipients of this year's citizen awards were selected. It was inspiring reading over the many different nominations, each of whom has done such great things in their communities, and some sometimes having done so for many decades. The award ceremony will be on November 2 so by the time you read this, the awards may have already been bestowed upon this year's worthy winners. Well done to them all.

Libby Jones, 021 208 0093
Councillor Kaipara
District Council
Director Northland District
Health Board

Womens' Suffrage 1893

To the Editor,

I read with interest your report of the Paparoa ladies who signed the petition to Parliament in 1893 concerning the Women's right to vote in the General Elections.

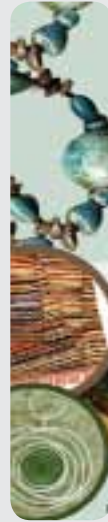
The women who settled in the early 1880's were so strong and forward thinking and I had wondered if any of my relations were involved. I was very happy to see that four of our family had signed the petition that saw New Zealand become the first country in the world to allow women their right to vote.

Of those from Paparoa I have identified who they were:

Cliff, Elizabeth (nee Sykes) who was Mrs Richard Cliff
Cliff, Elizabeth Anne (nee Wilson) who was
Mrs James Redfern Cliff (my grandmother)
Cliff, Clara (who later became Mrs Dreadon)
Fenwick, Annie (nee Cliff) daughter of
George and Annie Cliff.

Signed: Elizabeth Metcalfe (nee Cliff)

Arts & crafts fair



A group of locals have organised this fair to showcase some of our community talent and to give those artists and crafters the opportunity to sell their creations. With 23 stalls registered so far it's a great opportunity to start on those

Christmas presents. There's no entry fee, refreshments will be available and expect it to be cash only. Come and support our local artists. See you there.

Sunday 18 November
Paparoa Hall
Open 10am to 3pm

Lea Dodson & Janet May

Paparoa Print Shop

At Skelton's
Paparoa Drapery
431 7306



See Robyn for
all your printing needs

Birt & Currie Surveyors Ltd



Local Phone
09 280-9591

Timely,
friendly &
personal
service

info@landsurveyors.co.nz
www.landsurveyors.co.nz
PO Box 120 Paparoa 0543

Crompton Engineering Ltd

Phone/fax 09 439 2393
31 Jellicoe Road, Ruawai



Hay Racks
- covered
or uncovered

Palm Kernel
Trailers



website: cromptonengineering.co.nz
email: crompton.eng@xtra.co.nz

THE KAURI MUSEUM

Real New Zealand Heritage

What's on at your Museum

Exhibitions:

- * Otamatea Quilters' Group Annual Show
- * Textiles - *A Touch of Lace for Every Occasion*
- * Tudor Collins - *Man of Many Faces*

FREE ENTRY to the museum for residents of the old Otamatea District

5 Church Road, Matakoho, Northland. p: 09 431 7417 w: www.kaurimuseum.com

St John Otamatea

Paparoa –
Maungaturoto –
Kaiwaka



St John
Here for Life

Thank you

In your area this year to date, your generous donations helped support

709 emergency incidents attended

approximately **2,040** hours
on the road

87,000 km covered by **22** volunteers

Find out how you can help at
stjohn.org.nz

Settlers' Day better than ever

Settlers' Day has become The Kauri Museum's biggest day of the year and on 6 October the museum truly came alive as 1500 people streamed through the doors during the day to look, learn and participate.

With exhibitors from Auckland to Whangarei there was something for everyone - including a saddler, cobbler, builder, farrier - all showing the tools of their trade. Kids activities ranged from helping to make rope, making art prints, making butter, to using carpenter's hand tools. Music was heard all day with the City of Sails men's choir a standout.

The museum truly lived up to the day's theme, 'Revolution of Industry'. Now, with the event over, it's time to consider next year's event and start planning!

The Board and staff thank all



those in the community who helped in many ways to make Settlers' Day such a success, and especially our wonderful volunteers.

Mary Stevens

November news



WHITE RIBBON DAY 25TH

Our annual White Ribbon Day barbeque will be held next door in the front of Amour Beauté. It's held as a reminder that domestic violence is still a big issue in communities across New Zealand. Our confidential service is available to support families experiencing the effects of this. We're grateful that this issue continues to be talked about and publicised and for us to find ways to intervene wherever this is present.

CHRISTMAS We encourage families to think about the basics of Christmas. It should be about connecting families, sharing food, enjoying being together and having valuable family time over the summer months.

SHOPPING TRIPS The mini-bus makes two trips to Whangarei for shopping each month; these are the 2nd Tuesday and the 4th Wednesday of each month.

YOUR COMMUNITY HOUSE is going along smoothly. Remember we are available Monday to Friday, 9am to 3pm. Phone us on 431 9080 or call in to enquire about our free services which include Parent Coaching, Counselling, Financial Mentoring, Family/ Whanau Support.

The team at OSC

CABINS FOR RENT



2.4 x 3.6m \$65 P/W
2.4 x 4.2m \$75 P/W
plus delivery & bond

INCLUDES POWER LEAD,
CARPET, AND CURTAINS

FULLY INSULATED

Ph Keith 021 2394251

HOMEKILLS



WAYNE & ANNETTE

09 439 2020

Dry Aged Beef Specialists
Traditional Manuka wood smoked Bacon & Ham
No Retail
TOKA TOKA

WOW - what's new at Empire

Empire Art & Collectables has just celebrated its second birthday in the village and has gone from strength to strength over the last couple of years

Empire's owner Jillaine Murray started the shop as an outlet for her own art and craft and in the beginning, was selling on behalf of seven other artists. The shop now sells on behalf of over 40 other artists, makers and artisans, the majority of them local.

Over the last 12 months, Empire has shared its space with 'Folk', and together they created a wonderful community 'bumping' space and a regular weekend haunt for locals. With the folk from Folk heading overseas, Jillaine was keen to continue providing great coffee, some sweet treats and a space for community to meet on the weekends. And so, Empire Art & Collectables has become Empire Art & Espresso, and the operation will expand to include a café element.

Jillaine was slightly nervous about taking on the café at first, but was encouraged by supportive locals who love the mix of art and coffee and want to see it continue. The first thing on her agenda was finding a fantastic barista. Along came Nellie, who has been making great coffee for the village for some time now, and will be no stranger to most

of you. "She makes consistently good coffee, she has loads of 'hospo' experience and I'm really excited about her being on board" says Jillaine. "She's the queen of the coffee bean! It means I can focus on looking after the art and craft side of things and know the coffee machine is in good hands".

The second thing on the agenda was to find someone who could offer a small but delicious selection of amazing cakes and slices. As luck would have it, Jillaine crossed paths with Vicky Kelly of Sweet Delights, who has recently returned from living in Paris where she trained as a Cordon Bleu patisserie chef. Sweet Delights will be supplying Empire with a changing selection of cakes and slices each week, as well as their wildly popular biscotti. There will also be a couple of exciting new savoury options from local artisan makers for those that don't have a sweet tooth. Empire reopens on Saturday the 3rd of November and looks forward to carrying on the tradition of serving great coffee and treats with a side of original art and quality craft works.

PP

Lion fish v possums?

While NZ bush suffers from the destruction of native birds and plants by introduced Australian possums, Barbados reefs suffer from an invasion of lion fish. As a 'sought after' aquarium fish lion fish was possibly transferred from its Indo Pacific native habitat to the Atlantic Ocean by tropical fish breeders around Miami (first spotted there about 1994).

Unfortunately, just like the possum, there are no natural predators in the Caribbean and this destructive and poisonous spined fish has multiplied. They can mate three times in a season producing 15,000 eggs and they can consume up to 80% of small reef fish which otherwise keep the coral healthy. When visiting, local fishermen told us that the eel population controls many young lion fish close to the shore, thank goodness, as the venom in the spines causes painful swelling, nausea and breathing difficulties for humans. Of course this venom also saves the fish from other predators.

Fortunately lion fish is now a delicious menu item, chefs have produced excellent recipes and an annual 'Lion Fish Derby' teams competition is held. The venom protein is destroyed by heat making it safe to eat, although great care must be taken in preparation. I likened the derby to the Paparoa Possum Purge - except we don't feast on possum!

Stella



ART & ESPRESSO

ORIGINAL ART

BANGING COFFEE

Shop Hours: Friday 10-4 Saturday & Sunday 9-3
(Café open weekends only)
1994 Paparoa Valley Road | Phone: 021399555 | www.empireart.co.nz

Paparoa Store

Proudly Supporting Paparoa

OPEN 7 DAYS

Monday-Saturday 7am-6pm

Sunday 9am-5pm



We stock a great selection of

CONFECTIONERY, ORGANIC, DELI, MEAT,
FRUIT, VEGES, FROZEN GOODS, BEER, WINE
and a wide range of grocery items at excellent prices

DVD's \$1 to \$8 per night

EFTPOS NZ HERALD POST CENTRE

Phone / Fax 431-7320

Cnr. Franklin Road and State Highway 12

Supporting Tamariki to Learn



Te Arahi

The Ministry of Education's Learning Support Service and Resource Teachers: Learning and Behaviour (RTLB) have been working with your Schools/Kura, Early Childhood, Te Rūnanga o Ngāti Whātua and Te Uri o Hau to provide better support for children.

What is happening?

If you have a concern about your child's language development, learning progress, social and emotional wellbeing, or behaviour, Te Manawa Tahī have specialists available so you can discuss your concerns directly with them.

Through this discussion we will determine what help may be required and identify next steps.

When is this happening?

Please see the timetable below for information on when and where Te Manawa Tahī will be in your community. Te Arahi will be flying on a flag outside each Te Manawa Tahī venue.

You can ring and make an appointment by calling 0800 524 84 256 or talk to your School / Kura / Early Childhood centre and they can call us to make an appointment for you.

You can also email us at TT.Support@education.govt.nz or visit our Facebook page "[Te Manawa Tahī Tai Tokerau](#)" and keep an eye out for our updates and helpful resources.



Te Manawa Tahī Timetable



Date	Hub Location	Appointments Available
31 October 2018	Maungaturoto Primary School 8 Gorge Rd, Maungaturoto	9:30 am to 2:00 pm
7 November 2018	Mangawhai Museum Village Molesworth Dr, Mangawhai Heads	9:30 am to 2:00 pm
14 November 2018	Paparoa School 14 Franklin Road, Paparoa	9:30 am to 2:00 pm
21 November 2018	Archie Bull Hall Kaiwaka – St Pauls Church Hall 11 Kaiwaka - Mangawhai Road, Kaiwaka	9:30 am to 2:00 pm
28 November 2018	Maungaturoto Primary School 8 Gorge Rd, Maungaturoto	9:30 am to 2:00 pm
5 December 2018	Mangawhai Museum Village Molesworth Dr, Mangawhai Heads	9:30 am to 2:00 pm
12 December 2018	Paparoa School 14 Franklin Road, Paparoa	9:30 am to 2:00 pm

Trash & Treasure



Well, Maungaturoto and surrounding areas, you have responded brilliantly to the 35th year of this district's St Johns 'Trash and Treasure' week. Thanks to your support we've raised \$10,500.

From the team who helped with the heavy partitions on Friday after the market to those who turned up from Sunday onwards to help sort and price up all the items for display on tables and hangers, to those who helped dismantle and sort items on Friday afternoon, thank you! To those who provided items for sale (including home baking) you too are awesome.

AND to the team who made themselves available during the week to collect and deliver items and to man the sales desk - we couldn't have achieved this without your support and positive attitude.

It has been decided that proceeds from the week will be dedicated to the young people in our community. We have some programs in mind so watch this space.

Raffle prize winners have been notified and are listed on local noticeboards.

THANK YOU ALL FOR YOUR SUPPORT. WHAT A GREAT COMMUNITY!

Eileen Parsons



4T-DIGGER – BOBCAT – TIP TRUCK

Property Maintenance – Driveways – Building Sites
Stump & Tree Removal – Hole Boring – Chain Trencher
Calf Shed and Stockyard Cleaning

KAIPARA – WHANGAREI – RODNEY

Phone Matt: 021 199 6677

Email: mprabrownecontractors@gmail.com

do you need a
WEBSITE ?

Local, friendly
website design
& management.
sme-sitedesign.co.nz

Contact Paul for more information:
E: paul@sme-sitedesign.co.nz
T: 09 431-7063
M: 022 625-4156

**Get More Customers
Cost Effective Marketing**

The
Glass Guy



Phone Colin
09 431 6595

Buffalo cheese on menu

In a quiet valley near Paparoa reside a wonderful herd of water buffalo. They don't live in water as their name suggests but do like to wallow in wet areas.

As a cheesemaker, I'm excited to have access to fresh buffalo milk. It gives me opportunities to create a range of cheeses like mozzarella and burrata as well as experimenting with new recipes too.



beasts have calves or are due to calve very soon. The calves are gentle and mothers biddable. Anneroe manages

There's one maturing in the cheese cave now and can't wait to see how it tastes.

Buffalo milk has many health benefits:

- * Increased protein
- * Easily digestible
- * Great for those who are dairy sensitive

Twenty of these beautiful big

these big girls with a quiet and firm voice and they respond positively.

They are each producing around five litres of snowy white milk which will increase in the future with good management and



breeding. The market is crying out for this rich, creamy, high yield milk.

Check out the Natural Green Buffalo Facebook page and local Facebook pages for milk availability.

Jas Futter- Fromage at Franklin



ADAM STEVENS BUILDER

Licensed Building Practitioner

For new builds, alterations and roofing

021 741 363 / 09 431 6245

Cameron Philips CABINETMAKER Matakohē



- Kitchens
- Custom Furniture
- Furniture repairs & restoration
- Custom run mouldings
- Stairs & Timber Doors
- Residential & Commercial Joinery

QUALITY WORKMANSHIP

09 431 7579

cam@cp-cabinetry.co.nz
http://cp-cabinetry.co.nz



Trash to Art winners

White Rock Gallery's Trash to Art competition held at Labour Weekend showed creative talent in abundance. There was a strong emphasis on things environmental and, as we've come to expect with this genre, plenty of humour. Ruawai artist Suzanne

Harrison had a strong showing with three wins overall, congratulations to all who entered with such wildly original creations.

Thanks also to Betty Cairns for her donation of a quilt for the Trash to Art raffle, e drawn at the October 27th Paparoa Farmer's Market - winner was Ruth Mason.

AND THE WINNERS WERE:

RECYCLED:

- 1st Susanne Harrison ... 'Fanbird'
- 2nd Susanne Harrison ... 'Futurewitchic'
- 3rd Janice Booth 'Get Drastic, Ban Plastic'

FOUND OBJECTS:

- 1st Susanne Harrison ... 'Puddy Tat'
- 2nd Peter Panhuis 'Off the beach'
- 3rd Edie Chappell 'Treasured'

HIGHLY COMMENDED:

- Ross Murphy 'Holy Bird House'
Peter Panhuis 'Slightly Agitated by the Grey Matter'

VIEWERS CHOICE:

- Ross Murphy 'Holy Birdhouse'



'Fanbird' by Susanne Harrison winner Recycled

Keith the TV Guy Freeview digital TV



20 TV and 9 Radio/Music channels are currently being transmitted.

Satellite dishes, decoders, cable etc., supplied and installed.

09 431 7143
or 021 239 4251

FARMWORK SERVICES

For all types of fencing, stockyards, handyman work, tree felling, tractor work etc.



phone
Mike 09 431 6509
027 203 2694

email
farmwork.services@gmail.com

12 tonne digger now available for driveways, farm tracks, hole boring etc

LANCE KEAY CONTRACTING LTD

- Effluent Pond Cleaning
- Round Bale Hay & Silage
- Rippling & Discing
- Power Harrow & Air Seeder
- Under Sowing
- Gorse/Scrub Mulching
- Conventional Baling

Ph: 09 431 6308

E: lancekeaycontracting@farmside.co.nz

PH: 021 383 908

What's on at ORT

SLEEPING BEAUTY

Otamatea Repertory's end-of-year production will be staged over two weekends starting the end of November (see advert and story pg 11).

ALBI AND THE WOLVES WITH MOLLY MAY

Saturday 3 November at 7.30pm will be a very special opportunity to see our own 'Albi' (Chris Dent) in concert, with his highly-acclaimed band which recently won a Tui Award for Best Folk Album. Supporting act for the evening is our very own Molly May. Tickets are on Eventfinda. Presales \$20 and door sales \$25.

RINGERS AND SINGERS CONCERT

On Sunday 9 December at 2pm the Whangarei Handbells group will combine with several of our singers. This promises to be a delightful afternoon. More details next month.

YOUTH THEATRE 2019

This popular program will run in the new year at the theatre, 21-25 January (Mon-Fri 9am to 3pm, with a show performed Friday evening). Registration is now open for your child/teen; price per child is \$130 (includes ORT subs and an evening meal on Friday). Contact Maura Flower by phone, text or email at 022 354 2670 or maura.flower@gmail.com



'A picture is a poem without words'*

And that is what local artist Kathleen Reynolds has aimed for in her recent exhibition at Muddy Waters art gallery in Dargaville. The topics she returns to again and again are those based in nature. The mighty kauri tree, the waters of the Kaipara and the birds of NZ.

The iconic tui clinging to flax heads while his feathers glint in the sun is a favourite and very popular with the buying public, while the fiercely free karearea has also found fans. Kathy's preferred medium is oils so this series of paintings showcases her talent in this area.

White Rock Gallery continues to show not only her work but that of many other local artists. Take a break and visit their new location at Matakohe's Kauri Museum.

*Horace, born 65BC



The Bay Leaf Line

When Margaret Bailey (Maggy) retired to Whakapirau three years ago she relocated a house, did a few renovations and started her garden. However she quickly realised this was not going to keep her busy and involved as an active member of the community, hence 'The Bay Leaf Line' was started.

Having worked in the food and beverage industry for many decades, food was where her focus was to be. After much research into good quality olives she found that Greek Kalamata were most to her liking. Marinated in Greek virgin olive oil together with different spices and herbs, these are her best sellers.

To enhance the olive line she started to use different types of hummus. To date there's been plain, beetroot, roasted red peppers, roasted carrots, turmeric and fresh ginger choices.

The mint and pea dip has been hugely popular and more varieties will be on offer soon. She's matched the dips with

spent grain crackers, also a great seller. Different spices blended together were a further new item with recipes for customers to follow. And, with the BBQ season just about to kick off these blends can be used as rubs on your favourite meats prior to cooking. If you like HOT the Harissa is a must for any 'heat aficionados' out there.

Tussy Mussy candles made from soy wax are another aside. These burn for over 40 hours and the scents will perfume your house beautifully. With many more ideas in the pipeline watch this space!

Maggy loves living in Whakapirau, a great friendly little community and enjoys



pottering in the kitchen. You can find her each Saturday at the Paparoa Market, where she's met some great people. "What a wonderful way to spend my retirement", says Maggy. PP

EASY • CONVENIENT • EFFECTIVE

HMS GROUP ACCOUNTANTS

Providing you mobile & online services

FREE CONSULTATION

Dedicated to providing efficient, affordable services to small and medium sized businesses, trusts, individuals and non profit charities

09 431 7024

021 723 722

steve@hmsgroup.co.nz

www.hmsgroup.co.nz

HMSGROUPACCOUNTANTS

Maggie's Gold DOE tramp

Our Duke of Edinburgh Gold group recently spent six days in the Kaweka Forest Park between Tāupo and Napier-Hastings. For our group of seven students, this was the penultimate tramp of our Duke of Edinburgh days, and the hardest so far by a long way.

The whole time we were walking we all felt there was no such thing as a 'flat area' with the track often taking us straight up and straight back down again. Sometimes, we were climbing up 600 vertical metres in around 3km and there were many testing spots if you weren't quite comfortable with heights. We were definitely earning the gorgeous views we found whenever we broke through the bush line, with beautiful blue sky and mountain ranges all around us. To one side



were the snowy slopes of Mt Ruapehu and on the other the coast of Napier-Hastings. At nights we camped at DOC huts, some of which had only a four person capacity, and therefore a couple of nights were spent out under the stars.

This tramp was a true challenge for everyone there and we all ended up pushing ourselves way further than we ever thought we could. It gave us many skills and a lot more experience which will be put to

use during six days tramping in the Nelson Lakes area as our final qualifying tramp.

Maggie Hames

New talent shows-up at ORT

'Sleeping Beauty', by Ben Crocker, directed by Brittany Dyer will be staged at Otamatea Repertory over two weekends at the end of November and start of December. It's an enchanting love story set over the course of one hundred and eighteen years and this production features some new local talent.

'Carabosse' is played by Cindy Balfour who is new to the theatre and comes with a dancing background. Amber Corbel, who plays 'Spindleshanks' is a Paparoa local Otamatea High School student who has been involved with ORT for several years, albeit behind the scenes, and this is her first principal acting role.



Cindy Balfour (top) & Amber Corbel

Meanwhile it's a family affair for John Longdon and sons Corban, Oscar and Felix. John is a first-time actor and chorus member who has stepped up during rehearsals to fill in for principal roles. Oscar and Felix also appear in the show, while older brother Corban has joined the backstage crew.

Young Brittany Dyer, who has been associated with ORT over

the last few years, is directing her first full-length show, having earlier this year successfully directed the one-act play "I Never Saw Another Butterfly".

Join us for some very messy cake-baking, jokes by the bucket load, plenty of songs and lots to shout about as our heroes fight to keep the Princess safe from the clutches of the wicked Carabosse and her very naughty cat, Spindleshanks.

There will be six performances over two weekends November 23-25 and November 30-2 December. Friday evenings at 7.30pm and matinees on the Saturday and Sunday afternoons at 2pm. Bookings are now open at Tony's and online at www.ort.org.nz



NORTHLANDS BIGGEST BED OUTLET STORE

- 1/2 PRICE BEDS
- SECONDS-SAMPLES
- SLAT BEDS
- PILLOWS
- TOPPERS
- ADJUSTABLE BEDS
- BEDROOM FURNITURE



**STOP BY AT THE WELL CAFÉ
OPPOSITE US - WHEN YOU COME.**

(09) 439 2243
18 Freyberg Road, Ruawai

Otamatea Repertory Theatre presents

Adults \$25
Students \$12

Sleeping Beauty

By Ben Crocker
Directed By Brittany Dyer

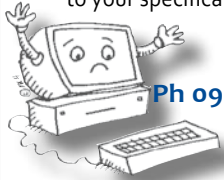
Fri 23, 30 Nov 7.30pm
Sat 24 Nov, 1 Dec 2pm
Sun 25 Nov, 2 Dec 2pm

Tickets available at Tony's Lotto Shop, Maungaturoto & www.ort.org.nz

Specials available see website for details

R & D MACDONALD COMPUTERS

Call Ross with your
computer problems & repairs
He'll even build a computer
to your specifications



Ph 09 431 6221

email: ross@paradisebreeders.co.nz

**PAPAROA
FARMERS MARKET**
LOCAL GOODS DIRECT
FROM THE PRODUCER

EVERY SATURDAY
gam-noon
at the Village Green
ph Ruth 021 433 969

Community Connexions - Arty Farties Inc.

Sunshine- showers- wind! The fruit trees here are intact, so we are looking at a bumper crop of fruit. Have you looked at your fruit trees lately?



The layers of clothes are coming off: One minute hot, next minute cold.

We have kale to give away at the moment, lovely and fresh - makes nice smoothies. Thank you all for your support in our garage sale on Sundays, be it a giver or a buyer.

Come in on a Thursday, Friday or Sunday. We are open from 10am to 2pm on those days.

Here is a little poem that I learnt as a child to help me overcome my fear of mice (a lot of them around at the moment):

"I think that mice are rather nice;
their ears are pink, their teeth are white
They run around the house at night.
They nibble things they should not touch-
and no-one seems to like them much.
But I think mice are rather nice!"

Cheers from Anne and team Arty Farties.

Arty Farties Joke of the month:

"Ladies! Don't forget our Sunday garage sale!
It's a chance to get rid rid of those things that are no
longer useful around the house.

Bring your husbands!"

Growing Pains

What a great show at Otamatea Repertory Theatre. We enjoyed participating in a very funny production by Whitney and Alex that shared their life experiences in song and clever vignettes.



It was a treat to see local talent like Whitney returning to the area and Alex (Otamatea High School drama teacher) proved to be an excellent performer and singer in the duo.

Their duets were clever, professional and a pleasure to hear.

Maybe we will have the pleasure of seeing them again in the future.

Stella

COLOUR & CUTZ

- Ladies & Mens Cuts
- Colours & Highlights
- Weddings
- Gift Vouchers

All colours & products used
at the salon are organic

Salon 431 7255 Gaye 021 115 8056

OPEN TUESDAYS TO SATURDAYS

Make your Xmas appointments early
1994 Paparoa Valley Road



November's garden

Lovely sunny spring days and the garden looks great- but- where are the bees? I have several echiums and their blue flowers are usually covered in bees - but I see just one solitary bee this morning. The peach tree is covered in blossoms but hardly a bee in sight- does that mean no peaches? Have the insecticides killed off our bees or is it the wasps or maybe it's just at my house? I do have broad beans to eat but not as many as usual as the flowers have not been pollinated.



No such luck with the stinky green vegetable bugs- there are plenty of them. I kill heaps in the cool mornings as they rest on the kale. The white butterfly is also out in numbers. The black-eyed-susan looks great climbing all along the tin fence and so far I've managed to prevent its seedlings growing anywhere else. Concrete on one side helps! The orange flowers match the self-seeded calendulas that have come up from some fancy double ones I was given last year and which are nearly true to the parents. Bluebells are one of the most rewarding and easy to grow bulbs. They seem happy under trees, on the side of the drive in wet places and are self seeding in a very nice way. They're great to pick and give bunches to friends with no care needed to grow them.

Plant dahlias now; also tomatoes, capsicums, egg plant, courgette and other summer crops. Rotary's calf litter has really improved the clay soil in my vegetable garden, resulting in excellent broccoli after blood and bone fertiliser was added. Have a look at the Paparoa Show Schedule on line and plan your entries. The show is much more fun if you are entering. Amazing how excited you can get over a first prize card!

Stella

first national
REAL ESTATE | Roper & Jones

Tony Northcott

I have buyers looking for houses, lifestyle blocks and farms now. If you are considering selling your property, call me today for a no obligation free appraisal.

021 831 864
tony@fnkaipara.co.nz
roperandjones.co.nz

Dargoville Realty Limited Licensee REAA 2008

A summer of tennis

Tennis for all ages is up and running at Paparoa Tennis Club. We have two hard surface courts situated beside the Sports Pavilion in the Showgrounds. All players are welcome, experienced or otherwise! It would be great to have some new players, no matter what skill level. Subscriptions are kept at a reasonable level in an effort to make it accessible for all. We recommend that sports shoes be worn on the courts. On occasions through the season we arrange for a professional coach to take some sessions (dates are advised when confirmed).

Thursday tennis:

4.30pm for primary school age
5.15pm high school students
6pm adults

Friday morning social tennis continues, starting at 9.30am, as it has all through winter. One realises just how many pleasant winter days we do have! And in summer it's good to play in the morning before the heat of the day.

Fun tennis afternoon and AGM

Saturday 17 November, starting at 1pm. Open to all ages, followed by afternoon tea with our Annual General Meeting at 3pm. Everyone welcome to attend.

Sue Skelton 431 6224



A story of Paparoa tennis

Records of a Paparoa Tennis Club date from the early 1900s but then the club fell into recession. Subsequently in 1958, sixty years ago, Ron Skelton called a meeting of the community to form a committee to restart tennis in Paparoa.

At that time, they mostly played social tennis with some occasional interclub against Ararua Tennis Club.

In 1977, after many years of this, an enthusiastic committee put a new lease of life into the club. They created a junior interclub and, as they were a part of the Otamatea Tennis Association, they entered two interclub teams into the 77-78 season. Both teams were runners up in their grades.

As participation grew, in the 79-80 season there were up to four teams being entered. This level of participation continued throughout the 80s.

In 1980 tennis club members and other community clubs such as the local playcentre and netball, were fundraising hard to raise the \$10,000 needed to resurface the



courts. This was finally completed in October 1981, 20 years after the need was initially recorded in the club minutes! This surface is still in use today.

Club championships and weekly play continued until around 1990 when membership began to drop off. By November 1991 there was only occasional social tennis being played.

However, in 2009, after 18 years without a club, tennis was restarted. With some money still in the bank, plus help from outside grants, the courts were revitalised. New lines were painted, nets purchased, higher fences built and a volley-board was re-installed.

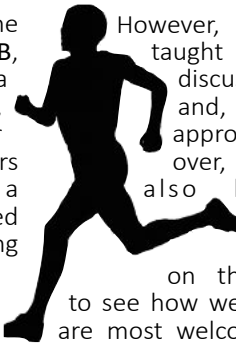
Tennis continues to this day, with weekly sessions on Thursdays for all and social tennis on Friday mornings.

Summer athletics start

Club athletics commences Monday 5 November, running through until close of the school term in December, taking a break over the school holidays and recommencing at Term 1, next year.

Officially known as the KAIWAKA ATHLETICS CLUB, meetings are held at Otamatea High School, Maungaturoto, from 5-6.30pm, weather dependent. Parents/caregivers are expected to stay on as a number of adults are needed to help run the evening successfully.

While all athletes are welcome there usually tends to be a predominance of younger participants. During November/December the running programme will be slightly modified as the track will not have been marked out.



However, skills will be taught in long jump, discus and shotput and, for athletes approx 10 years and over, high jump will also be available.

If you wish to come along on the first night to see how we operate, you are most welcome. Fees are reasonable.

Any queries, please call Eileen Parsons at 021 1420 357. Please leave a message if no reply and your call will be returned.

BATTENSBY Bros.

CONTRACTING LTD

- Firewood (WINZ approved) • Ground Cultivation
- Fencing • Silage and Hay • Fertiliser Spreading




Glenn 021 983 734 Ross 021 983 594

Ph: 09 431 6186 Email: battensbybrothers@xtra.co.nz

YOUR TYRE SPECIALIST

Providing 60 years of service in the heart of Kaipara.

- Tyres
- WOF
- Servicing

- Brakes
- Suspension
- Alignment

- Wheel Balancing
- Batteries

Garnetts Tyre Service

📍 2 Gorge Rd, Maungaturoto

☎ 09 431 8255



LIFESTYLE AUTOS

Roger Price

Full Mechanical
Services

Warrants
of Fitness



Paparoa Valley Road - next door to g.a.s.
Phone 431 6620



From our family to yours ... Baby daze

The fastest way to challenge expectations - is to have a baby.

Expected on a certain date - comes 6 days late.

Expected to be a girl - it's your fourth boy.

Expected an easy pregnancy - but I couldn't walk for four months from collapsed pelvic ligaments.

Beyond birth, I had no expectations. (In hindsight, this position would have been easier right from the start, nine months ago.)

Who knows when a newborn will sleep, so just sleep when they do. Who knows when they will want a feed, just feed them when they want it. Who knows what unsolicited advice you'll receive about raising the child, just ignore what doesn't work for you and your baby.

Hudson Longdon arrived speedily at home on 5th October, weighing a solid 4.5kg (10lb).

Thanks for all the lovely



messages, cards and meals - we've been very well looked after. Hudson is continuing to put on weight well, I am healthy and in one piece as much as you can be with sleep deprivation, and all the other boys are loving the new addition to our family.

"A baby is a piece of heaven on Earth."
Jenny

Science Corner



A question on fluoride

NaF - sodium fluoride or
Na₂SiF₆ - sodium hexafluorosilicate

Fluoride exists in nature but only as a compound, as do sodium and other reactive elements. All water that has been in contact with the ground contains some fluoride as it washes out of rock and soil as ions into the water solution.

Why did it become linked to the prevention of tooth decay?

In the early 1900s dentist Frederick McKay began practising in Colorado where he found nearly all the population had brown mottled teeth but no cavities. He had a theory that it was caused by the water and this was supported when he travelled over the Rockies to Oakley, Idaho and found that after installation of a water pipeline from Colorado, children's teeth had been turning brown. He recommended that they no longer use the piped water and sure enough - nice white teeth again! However, he did not know what it was in the water which was causing the problem. After a long story concerning a town called Bauxite, more thorough water testing was done and much to the astonishment of all concerned they found a high concentration of fluoride. Further research showed that levels up to 1.0ppm in drinking water did NOT cause browning but DID prevent caries in teeth.

In 1944 a trial carried out in Grand Rapids and fluoride was added to the city water supply. Records were kept on 30,000 children for over 15 years. After 11 years the rate of caries in the children dropped by more than 60% - making tooth decay a preventable disease. Now 200 million Americans and 13 million children benefit from this discovery.

** The above information was gathered from: www.nidcr.nih.gov/health-info/fluoride/the-story-of-fluoridation (last edited July 2018)*

Where does fluoride come from? Fluoride occurs naturally in many soils and water - particularly in Southern Asia, the Eastern Mediterranean and Africa. It is naturally found in black tea, seedless raisins and wine (according to a U.S. Agricultural database - so I'm not sure how that compares to NZ wine?) All those are in greater concentration than 'fluoridated water'. If you were to drink over 12 cups of black tea a day you could be reaching the maximum safe level of recommended fluoride!

Does using fluoride in pills, teeth painting and toothpaste really help? Yes, it's been proved that small amounts of fluoride can make teeth resistant to tooth decay and help replace damaged enamel. Some people (with lucky genetics) have harder teeth than others and so would not require fluoride protection.

Excessive fluoride can cause problems. Different people require different amounts. Taking fluoride is just like taking vitamins - you only need very small amounts - too much can cause problems.

How does it work? Acids from the food we eat - in particular sugar and fruit juices eat away the enamel on the outside of the tooth. Fluoride increases the rate and growth of the enamel crystals and these larger crystals are more resistant to decay. Fluoride can do this when taken internally or by being applied. It can help new teeth buds forming in children to be made of a hard enamel which is more resistant to decay.

But surely fluoride is a nasty chemical - why would we choose to use it? So is chlorine but we eat salt (NaCl) - but it's not good in large amounts either!

So that's the result of my findings - you can make your own choice as to what you make of it. Whether you agree or disagree with mass medication of water supplies - it will not be a direct concern to us in Paparoa for the foreseeable future.

Stella



Kaipara Cleaning Co.

Tim & Sharlene Lord

- Pest Control
- Carpets & Upholstery
- Interior and Exterior Home Cleaning

e-mail - kaiparacleaningco@farmside.co.nz
Facebook - www.facebook.com/kaiparacleaningco

Phone 021 114 6729
www.kaiparacleaningco.co.nz

Beams, concrete & steel for bridges

There's good progress being made on the Matakohe bridges realignment project. Over two thirds of the earthworks have now been completed and pavement construction is now commencing. Concrete has been poured for Bridge No.1's deck and the next stage of works for Bridge 2 is to form and fix the deck steel.



The beam transporter reverses off SH 12 onto access road to Bridge 2

The beam transporter drivers have appreciated all the local interest and deliveries range from one to two per day Mon-Sat until all 30 beams are place. All going to plan, both bridges will be completed by the end of summer 2019. Across the length of the project, 2.5km of roadway will be built up with pavement construction and this has already started at the western end of the realignment. As there's a lot happening there will be more large plant on site and more truck movements on the existing state highway.



Next stage for Bridge 2 is to form and fix the deck steel

Letters from The Old Post Office

"The time has come," the walrus said, "to speak of many things", or words to that effect. And it is of many things that I wish to speak!



Tolerance, open mindedness and kindness. Not to mention, wine, dance and song - which can all help along this path of tolerance etc etc, although mainly because one can't remember anything that has been said or done, nor anybody else.

Therefore, it is difficult to take offence or mend the error of one's ways.

However, it is the aspect of tolerance that is currently exercising my mind. (One has to get exercise somehow. In fact, not only is it exercising the mind, it is clearly into interval training, sweat dripping off the corpuscular brain cells and other matters!)

Tolerance can be applied to many spheres, political, religious, environmental and the personal.

And it is of the personal that there needs to be some discussion. Namely, me, discussing it that is.

If I wish to perambulate the quadraped wearing an array of scarves, a red faded beret and a 20 year old jacket bought from the childrens' section of Ezibuy; its' capacious pockets full of bags, old hankies and several dog leads. And, if I wish to garnish this festival of attire with purple and black striped leggings acquired from the throwouts of a friend's daughter, then lightly drizzle these with green holey merino

socks- that is my right. It may be painful to view for some less sartorially challenged BUT it is still me, beneath. I still bleed red blood, I am still human despite the many and varied theories that may abound. And, of course my children do challenge this view. Which of course, as night follows day (at least on this planet) makes them semi-alien too, if their arguments are correct.

So dear readers, avert your eyes if I do offend, and mock me gently. And remember that

"Every herring must hang by its own gill"¹ ... or just that "All cats are grey in the dark."²

Deb

¹ S. Harwood (1609), ² John Heywood (c.1497-1580)

Place your Ad here

reaching your community for only \$25/month

all proceeds from advertising go toward community projects

contact Paparoa Press
09 431 7209
press@paparoa.org.nz

SHEPPARD ELECTRICAL LTD

ELECTRICAL INSTALLATION AND MAINTENANCE

Bill Sheppard
Electrician



021 975 618 OR
a/h 09 431 7196

Painter & Decorator

Tradesman's quality work guaranteed



- Interior
- Exterior
- Spray finishes
- Roofs
- Waterblasting

For your free quote call Mike 021 529 025

SHOP & BREW

Moonshine & Curios

Home Brew Supplies

Great Gift Ideas

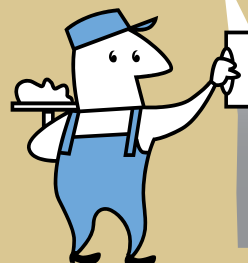
Layby Available



Wed-Fri 10am-4pm
Sat 9am-3pm
Sun 10am-2pm
1994 Paparoa Valley Rd
09 431 6547

TINOPAI PLASTERERS

WE GUARANTEE THE HIGHEST QUALITY FINISH



35 Years experience in...

- GIB Stopping
- Fibrous Plastering

for FREE quote, call us now!
Trevor 021 0300 073

SKIN IMAGE
PAPAROA - WAIPU
age younger with healthy skin

- ✓ Collagen Induction Therapy
- ✓ LED Light Therapy
- ✓ Eyebrow Feathering
- ✓ Skin / Product analysis
- ✓ Eyeworks & Waxing

(09) 431 6483 or
022 394 1184

REX BROWNE CONTRACTING

- Limestone & Metal Cartage
- Truck & Digger Hire
- Farm Roads
- Earthwork & Dams
- House Sites & driveways
- Wrapped Silage & Hay
- Cultivation
- Fencing & Mulching

Maize Silage planting & harvesting

☎ 09 431 7556
☎ 021 720 590

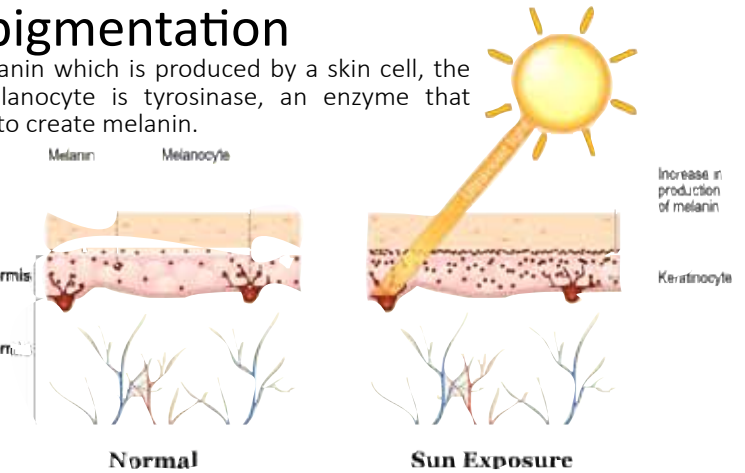
The season for pigmentation

The skin's pigment is called melanin which is produced by a skin cell, the melanocyte. Alongside the melanocyte is tyrosinase, an enzyme that oxidizes the amino acid tyrosine to create melanin.

When melanocyte is damaged by UV RAYS, a cascade reaction is triggered, causing an over production of melanin (hyper-pigmentation). Certain medications and hormones are also known to trigger hyper-pigmentation.

When treating pigmentation look for ingredients that inhibit tyrosinase activity. These are called tyrosinase inhibitors. A common tyrosinase inhibitor is hydroquinone which can only be prescribed by your doctor. Then there are other natural form of tyrosinase inhibitors which your skin therapist should be able to prescribe. Use Vitamin A to help regenerate, repair damage and keep cells healthy. Green Tea extract is a photoprotective, anti-inflammatory, free radical blocker that helps to repair UV induced cell damage.

Avoid all products with fragrance or essential oils as they can be photosensitisers and many are known to



trigger excess pigment. Only use perfume on your hair or clothes, never directly on your skin.

The best way to prevent pigmentation is always cover up when you're in the sun and use sunscreen. The less direct sun exposure equates to the reduced risk of pigmentation.

Finally, did you know that most of our sun damage is done by the time we're 18, but will only typically show in our 40's. If

you are still in your twenties or thirties and are serious about your skin health, ask your skin therapist to examine your skin under a skin scanner to identify any damage underneath so you can prevent further damage and prevent the existing damage from surfacing later on in life. Better to prevent than to treat later on!

Nina Quan
Skin Therapist, Skin Image
Paparoa - Waipu

Maungaturoto Primary School
presents the
Car and Bike Show
Sunday 25th November 2018, 10am - 1:30pm

Come and support our fundraiser for the Year 5 and 6 school camp

Food available including BBQ, Spit Sandwiches, Lions Caravan
Live entertainment

Be in to win a V8 Hot Laps Experience with Paul Manuell
People's Choice prize sponsored by **gas.** plus many more awards

Gold coin entry

To register your interest or obtain further details please email Tracey maungaturotocarshow@gmail.com

Entry for show cars and bikes is from Hurdall Street, next to the Four square - please be parked by 9am.

Proudly supported by **BROGAN FOUNDATIONS**



What's been happening

The first two weeks of Paparoa School's Term 4 were busy and included a visit from Roy Brickell of the Fire Service to learn how quickly fires can spread and how to escape if ever we had to.



Our annual 'Pet and Show Day' on the 26 October was much anticipated and we spent the morning prior preparing indoor exhibits of the traditional aqua jar and sand saucer alongside toothpaste box models, and shell and stick creatures. The judges were most impressed with the effort the children put into their arts, crafts and animal rearing. As the Facebook post said, "... a fantastic day - a true celebration of the bond between children and their animals".



Room 1 will join other local schools at Tinopai for a fun sports day on October 31 and our Kapa Haka group will be performing at the Kaipara Festival on November 3.
Julie Harper

HEY, KIDS . . .



LET'S DO SOME GARDENING!

Now that the weather is reliably - maybe - warmer, its time to think about what you kids want to grow!



This month, we're going to get started with 'Living Eggs'.

What you'll need:

- * 1 x rinsed out empty egg shell (with just the top of the noggin gently cut off)
- * 2 x googly craft eyes
- * cotton wool
- * watercress seeds - or alfalfa
- * an egg cup to stand your egg-head in

1. Start by giving your eggheads some personality. You can either draw their faces on or use some googly craft eyes.
2. Put cotton wool inside the empty eggshell. Dampen it with some water.
3. Sprinkle a generous amount of watercress seeds onto the cotton wool.
4. Place your egghead on a sunny windowsill and give it some water each day.
5. After about a week it should have a full head of cressy or alfalfa hair.

(www.kidsspot.com.au for more ideas)





Kaipara Physiotherapy
LYNDESEY BARGH PHYSIOTHERAPY

Paparoa Medical Centre
CLOSED TEMPORARILY
09 431 9062 or 09 439 1656

Maungaturoto Medical Centre
Mon/Thur/Fri (pm)
09 431 9062

email: lyndseybargh@callplus.net.nz

Whānau Talk vital Connections

We need each other, both in our families and in our communities. There are times when solitude is necessary but family and community connections are important. Connecting with others enhances us holistically, promoting physical, emotional, psychological and spiritual well-being.

Within our families we must create opportunities to connect with each other. Having meals together is one way. Make regular family meal times a priority as much as practical. Research shows there are many positive outcomes for doing so and it can actually be enjoyable and fun. In our family, we often start with a brief moment of being quiet for us all to catch our breath. As we interact, it's important to remember to focus on conversing, to share ideas and feelings rather than on who has eaten what. Conversation starters and simple games can be helpful. Spending focussed time together benefits everyone in the short and long term.



It's important to be present both physically and emotionally; and, again, as much as practicable. Then we can become aware of each other's feelings and perspectives and be available to offer comfort, empathy and assistance.

Play together, work together, be together

Many families live in communities where extended family members are not nearby, making our wider community important. Caring people in our neighbourhood - our schools, churches, clubs and organisations - all provide valuable support for families to become involved. For those who facilitate community groups, consider ways to involve families. When communities value and support families, and their contributions, it is enriching for all.

Diane McKinstry

Whānau Talk <https://whanautalk.wixsite.com/website>

Facebook: <https://www.facebook.com/whanautalk/>



Paparoa Motor Camp
CABINS | TENTS | CARAVANS | MOTORHOMES

17 Pahi Rd, RD1, Paparoa, Northland. Ph: 09 431 6515 Email: paparoamotorcamp@xtra.co.nz

Set in a quiet rural area, within easy walking distance to picturesque village with shopping facilities, a general store & post office, service station, restaurant, friendly country pub, takeaways, café, gallery, bush walks. Only 6kms to the Matakoho Museum.

www.paparoamotorcamp.co.nz



Books @ Ruawai

5 Freyberg Rd, Ruawai

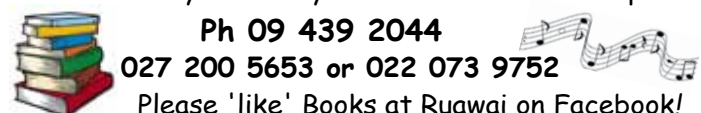
BOOK SALE still on!!
1/2 price books and 'Fill a bag with books' for \$5

Open: Monday Tuesday 9-12 noon
Wednesday Thursday Friday 2-4pm
Every Saturday 10am-1pm

Ph 09 439 2044

027 200 5653 or 022 073 9752

Please 'like' Books at Ruawai on Facebook!



Paparoa County Depot Trust Inc. Seeking grant applications

Applications for grants from the Paparoa County Depot Trust Inc. are now being called for.

To be eligible to apply for funding your organisation must be a charity/volunteer-based group.

Completed application forms must be lodged with the Secretary, Paparoa County Depot Trust Inc. by 5pm, 24 November 2018.

Application forms are available from:

The Secretary, A Butler, PO Box 28, Paparoa, 0543
Email: pctdi@yahoo.com

OUT & ABOUT AROUND TOWN

Great to have the Paparoa Lions Bush Walkway track open again after a very wet winter. Enjoy, but please be sure to clean your shoes at the wash station on entry to help prevent kauri die-back disease.

The next Matakoho Cycleway meeting is Thursday Nov 1st 3.30pm at Matakoho Hall. Planning is going ahead for the proposed trail to connect Te Kowhai Road, Ruawai with Matakoho and the proposed NZTA's 'old bridge trail'.

Music Makers who hold regular fortnightly sessions at the Sports Pavillion are taking a break until further notice - but will recommence early in 2019.

Our condolences to the family of Ernie Bate of Pahi who died recently just after his 80th birthday. Ernie was pastor at the Ararua Church.

Congratulations to Jenny and John Gilbert-Longdon on the much anticipated birth of their 4th son Hudson.

Did you know that Maungaturoto Primary School has just achieved their Silver

Environmental School status.

White Rock Gallery have just drawn the raffle for the quilt and it was won by Ruth Mason, co-manager of the Paparoa Farmers Market.

Circus Kumarani are holding a Northland Circus festival in Paparoa over the weekend of 11-13 January. Along with stalls/crafts there will be workshops, competitions, fire spinning and a gala show.

Arty Farties AGM is to be held Wednesday Nov 21, 5pm at the Sports Pavillion. All welcome. Come along and be involved in this worthy volunteer community focused group.

Annual General Meeting

Paparoa County Depot Trust AGM

Thursday 29 November

2.30 pm

Paparoa Sports Pavillion

All welcome



Rhoda Morrison
Consistent Award Winning Salesperson

Achieving top results
for Clients!

09-431 6912
0274 800 691

rhoda@fnkaipara.co.nz
www.roperandjones.co.nz

firstnational REAL ESTATE | Roper & Jones
Dargaville Realty Ltd, Licensed REAA 2008

SURPRISING
FLAVOURS

The Thirsty Tui

FRESH
INGREDIENTS



*Bang Bang!.....*For bookings of 6 or more we will provide **Christmas Crackers** for your table and complimentary sea salt & rosemary Pizza Bread to start.

Phone the Hotel to reserve a table and hear about our delicious Christmas menu specials.

• **PAPAROA HOTEL** •

www.paparoahotel.nz (09) 431 7359

A senior's version of Facebook

For those of my generation who do not, and cannot comprehend why Facebook exists: I am trying to make friends outside of Facebook while applying the same principles. Therefore, everyday I walk down the street and tell passers-by what I have eaten, how I feel at the moment, what I have done the night before, what I will do later and with whom. I give them pictures of my family, my dog and of me gardening, taking things apart in the garage, watering the lawn, standing in front of landmarks, driving around town, having lunch, and doing what anybody and everybody does every day. I also listen to their conversations, giving them "thumbs up" and tell them "I like them". And it works just like Facebook. I already have four people following me: two police officers, a private investigator and a psychiatrist.

Anon



LATTO
BUILDERS

021 7727 66

House Construction, Alterations
Renovations or General Repairs



WHAT'S ON - NOVEMBER 2018

The Kauri Museum open 7 days, free entry to Otamatea District residents
Exhibitions: 'Tudor Collins - Man of Many Faces'

Otamatea Quilters annual show
'A touch of Lace for every Occasion'

Paparoa Gala Day 3 November Village Green from 9am onwards

Art & Craft Fair 18 November, Paparoa Hall, 10-3pm

Tennis Fun Afternoon and AGM Sports Pavilion 17 November from 1pm

Arty Farties AGM November 21, 5pm Pap Sports Pavilion

Sleeping Beauty ORT's production 23 Nov to 2 Dec (see advert pg 11)

Maungaturoto School Car & Bike show 25 November 10-1.30pm (details pg16)

Paparoa County Depot Trust AGM November 29, 2.30pm, Pap Sports Pavilion

REGULAR EVENTS, MEETINGS AND ORGANISATIONS

Anglican Church St Marks 1st, 2nd & 4th Sundays 10am, Hook Road, Paparoa

Ararua Church 10.30am every Sunday, All welcome ph 431 6622

Art Studio, Ruawai Wed 10-12noon ph Frances 439 2554

Arty Farties Thur/Fri/Sun at the "Tile Shed"; Garage sale Sundays 10am to 2pm;

Beginners Patchwork, Mon 7pm, Te Pahi River Dr. For info: ph Anne 431 6229

Badminton Thurs 7pm, Paparoa Hall, \$2 students/\$3 adults ph Pete 431 6822

Crafternoons 1st & 3rd Wed in month, 10.30-4pm, Tinopai Hall ph Jo 431 7219

Exercise to Music Tue 10.30am Paparoa Hall \$5 ph Rose 431 7418

Farmers' Market Every Saturday 9-noon, Village Green. Contact Ruth 021 433 969

Grey Power Last Wed in month, 1pm, Anglican Church Hall, Mgto

Kaipara Marching Team Weds 4-5.30pm, Mgto, ph Rose Plunkett 431 7418

Library Temporarily closed due to pending Medical Soc building renovations

Line Dancing Thurs 10am-noon Paparoa Hall ph Rose 431 7418

Mainly Music Wed 9.30am Paparoa Comm Church, Carolyn Poyner 4316008

Mahjong twice monthly on a Tuesday. Call Marian Harkness 431 6332.

Maungaturoto Opportunity Shop Open Mon 10-1pm Wed 10-3pm Fri 10-3pm

Otamatea Quilters 1st and 3rd Mon month 10am, Paparoa Hall 09 439 2262

Outdoor Bowls Maungaturoto Green ph Tony 431 6026 or Brian 431 6884

Pahi Hall available for hire ph Sherryl Corbett 431 7127

Paparoa Community Church 10.30am every Sunday, 4 Hook Road 431 7106

Paparoa Garden Circle 2nd Wed of month Marg Bailey secretary. 09 280 9897

Paparoa Hall Functions venue ph Robyn 431 7306 or a/h Loraine 431 7290

Paparoa Lions Dinner Meetings 3rd Mon in month 6.30pm, Sports Pavilion

Paparoa Playcentre Tuesday and Thursday 10am-1pm Visitors Welcome

ph Bianca 431 6730 txt 021 782 456 or ph Jane 431 6148 paparoa@playcentre.org.nz

Paparoa Primary School Term 4 starts 15 October ends 19 Dec

Paparoa Toy Library Wed 10.30-1pm, Paparoa Comm Church, Hilery 431 7330

Paparoa Volunteer Rural Fire Force (VRRF) 1st and 3rd Tuesday of the month
6.30pm Depot Rd ph Cohan 431 6668

Plunket Ready Steady Wriggle Mon 10am Sports Pav. Tina Ball 021 033 5128

Qi gong Wednesday 9.30-10.30am at Paparoa Sports Pavilion 021-1353222

Selwyn Centre Thurs 10am for over 65's, St Marks, Hook Rd, ph 431 8193

Sports Pavilion - Functions Venue Bookings ph Jane Bailey 431 6148

St Mary's Catholic Church 10am Wed, 6pm Sat, Maungaturoto

Table Tennis Tues 7.30pm, Sports Pavilion \$2 Pete 431 6822

Tennis Thurs 4.30pm Primary, 5.15pm High School, 6pm Adults; Fri 9.30am;
ph Sue 431 6224 or Pete 431 6822

Waka Ama Tue & Thu 5pm, Sun 10am, Pahi Domain, ph Grant 027 474 3856

White Rock Gallery Open at new venue The Kauri Museum 7 days

Yoga: With Annie: Monday: 6-7.15pm Mgto Centennial Hall: Ph Annie 027 427 2644

PLEASE UPDATE US WITH YOUR DETAILS: press@paparoa.org.nz

Paparoa Press CLASSIFIED ADVERTISING

Country Blooms Florist Paparoa

Wed to Friday 9am - 4pm

Saturdays: 10am - 2pm

Flowers 'on request' after hours

Raylee Over 09 431 6941

Native trees for sale

Pohutukawas \$5 to \$7.50

Karakas \$5 to \$7.50

Nikau Palms \$5 to \$10

Phone Diane 09 431 6221

Storage Available

In Paparoa: Secure 20 foot

Containers - contact Brian

Plunkett 09 4317 418

Paparoa County Depot Trust

HOOK, LINE & SINKER

At last fishing is slowly picking up.



There have been more snapper about, plus some kahawai and some nice gurnard were caught last week.

Keep persevering with the fishing; and in any case, have a nice trip out in the harbour.

Happy fishing

LOCAL TIDES for November 2018

NOVEMBER TIDES - CALCULATED for PAHI-WHAKAPIRAU

DATE	LOW	HIGH	DATE	LOW	HIGH
1st	11.34am	6.17pm	17th	12.57pm	7.03am
2nd	12.50pm	6.52am	18th	2.02pm	8.08am
3rd	2.04pm	8.07am	19th	2.57pm	9.05am
4th	3.08pm	9.13am	20th	3.44pm	9.53am
5th	4.02pm	10.09am	21st	4.26pm	10.35am
6th	4.49pm	10.57am	22nd	5.07pm	11.16am
7th	5.33pm	11.41am	23rd	5.48pm	11.56am
8th	6.14pm	12.21pm	24th	6.31pm	12.37pm
9th	6.33am	12.59pm	25th	7.17pm	1.20pm
10th	7.12am	1.35pm	26th	7.38am	2.05pm
11th	7.49am	2.12pm	27th	8.26am	2.55pm
12th	8.27am	2.50pm	28th	9.18am	3.50pm
13th	9.08am	3.32pm	29th	10.15am	4.52pm
14th	9.53am	4.22pm	30th	11.18am	6.00pm
15th	10.46am	5.21pm			
16th	11.49am	6.27pm			

Community Directory

EMERGENCY: FIRE ■ POLICE ■ AMBULANCE dial 111

COAST TO COAST HEALTH CARE

Maungaturoto Medical Centre: 8am-5pm Mon-Fri 09 431 8576

Paparoa Clinic: Doctor Tue + Fri 8.30am-12.30pm..... 09 431 7222

For urgent after hours medical service (Wellsford)..... 09 423 8086

DISTRICT NURSE Dargaville Hospital 09 439 3330
Healthline - 24 hour service..... 0800 611 116

HOSPICE KAIPARA Dargaville Hospital 09 439 3330

KAIPARA DISTRICT COUNCIL Helpline 0800 727 059
Mangawhai Office..... 0800 100 388

LINKING HANDS Health Shuttle Service, Maungaturoto 09 431 8969

LIONS CLUB PAPAROA Secretary Mark Pilkington 09 431 7369

MAUNGATUROTO CHIROPRACTIC..... 09 431 8019

MAUNGATUROTO PHARMACY..... 09 431 8045

MAUNGATUROTO REST HOME 09 431 8696

NKT RECYCLING Huarau Road 10am - 2pm Mon-Sat....021 08 207 395

OTAMATEA COMMUNITY SERVICES Community House 09 431 9080

PAPAROA LIBRARY Membership free-of-charge, Wheelchair access
Mon 1.30-4.30pm, Wed 10am-12noon, Thu 1.30-4.30pm, Fri
9.30am-1pm. Open alternate Saturdays 9.30-12.30 (dates above)

PAPAROA PLAYCENTRE during session times.....021 185 2954

PAPAROA PLUNKET Cynthia Keay..... 09 431 8187

PLUNKET Helpline 0800 933 922

PAPAROA PRIMARY SCHOOL 09 431 7379

PARENT PORT Inc. free help for families Linda 09 425 9357

PHYSIOTHERAPY Lyndsay Bargh Mon/Wed/Fri from 8am...431 8576

PODIATRIST / FOOTCARE Jayne Short020 4022 6598

YOUTH & WHANAU FOCUS South Kaipara, Rose 09 431 7418

Paparoa's gone to the dogs!

The inaugural Dog's Fun Day Out put on by the Paparoa Hall committee on Sunday 14 October was a great success, attracting over 30 entrants. There was a great range of pets of all sizes, ages and breeds who arrived with their owners on this beautiful sunny day entering all the competition classes with enthusiasm. Show jump demonstrations of agility and tricks were a highlight as was the class for the look-a-like owners and their pets and even more so 'best dressed dogs and their owners'. A picnic atmosphere prevailed, 'Team Mac' cheered on their contestant and next year there'll surely be another 'Dogs' Day Out'.



Thanks to all who helped make the day happen:

The entrants, the judges - Janine Hames, Robert Hastie and Shirley Summers-Warner, the dog agility experts and trainers - Laurel Greaves, Annette Flannagan, Colleen Lauder, Rosalind Dick, MC Julie Holcroft, and the Lions for providing assistance and bringing the food caravan.

We are grateful to our Sponsors - 'The Vet Centre', Country Blooms, Skeltons Drapery, The Thirsty Tui Hotel and Kaiwaka Healthy Animal Foods. In addition Fine Foods provided many mini 'Chunky' & 'Possy' dog meat rolls which enabled every dog to go home with a gift!

Paparoa Hall Committee

KMU SURVEYS LTD
MAUNGATUROTO

Ken Urquhart

Licensed
Cadastral
Surveyor



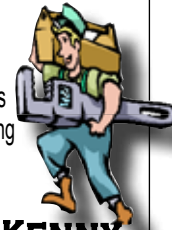
09 431 8705
021 161 2344

kenurquhart@extra.co.nz

PLUMBER

Kaiwaka to Ruawai

- 30 years' experience
- All plumbing services including new housing and maintenance



ANDREW KENNY
ph **027 642 8320**



PETE THE BUILDER

your local friendly builder

Peter Clark

Ph: 0276 713 416

petethebuilderltd@gmail.com

582 Pahi Road, R D 1, Paparoa, 0571
A/hrs 09 431 6005

Pets in the Valley



I was lucky enough to be involved with the Doggie Day held on October 14.

What a lovely day it was- full marks to those who came up with the idea and made it happen. We have such wonderful assets here in Paparoa - with the hall and show grounds and it is very satisfying seeing them used for positive events. I only saw one dog wounded in the course of the day - a tooth hole in Charlie the Labrador's nose, but otherwise dogs were very well behaved.

I do have one complaint - I think it is rather mean to have a class where the judges have to decide which dog 'they would most like to take home!' There were so many delightful dogs of all shapes and sizes that it was really impossible to choose.

Seeing the agility dogs do their stuff is always amazing - very inspiring to see what you can do with your dogs if you want to further their education (and yours).

Sounds like it went so well it will happen again next year. Hope so.

Janine



The 'Best Smilers'

Starbright Wellness

Massage

Reiki

Reflexology



Fri/Sat
bookings

Vicky Jennings

021 2484259

144 Franklin Rd, Paparoa